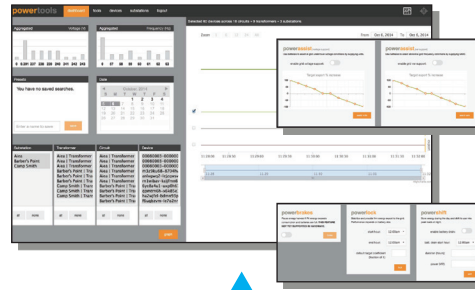
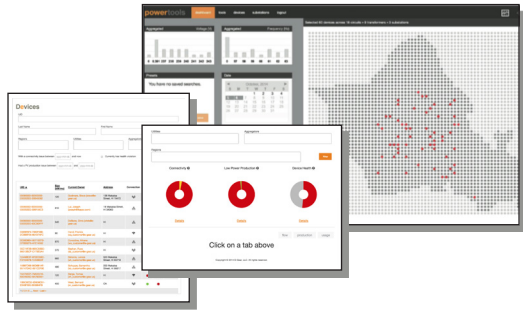
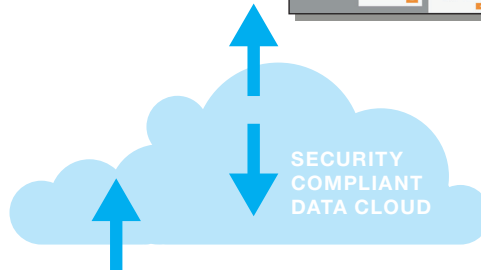


PowerTools™ Asset Management

PowerVision™ Utility



PowerControl™ Consumer



Energy Management Controller

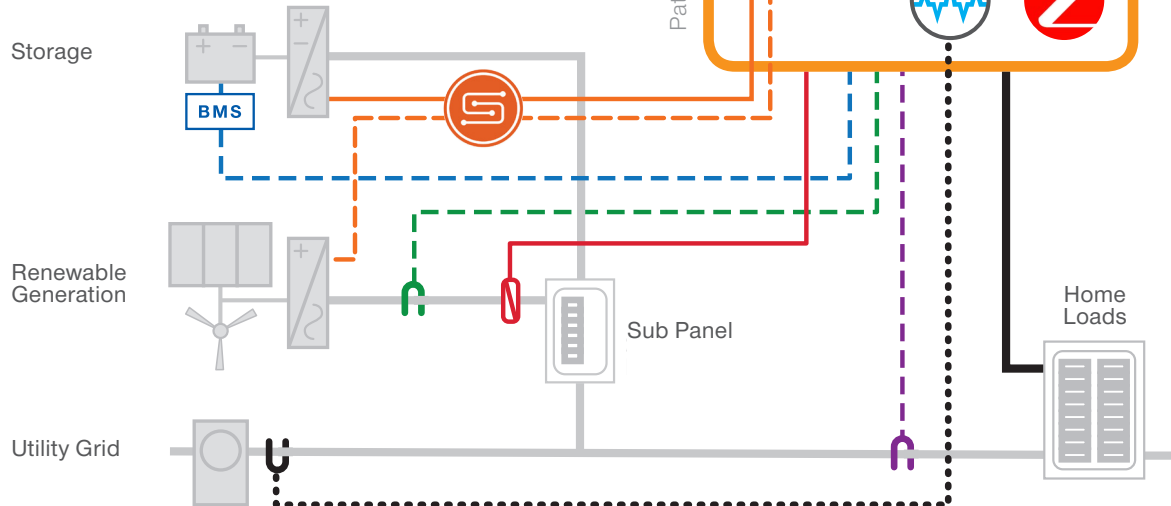
- Load Monitoring
- Energy Generation Monitoring
- SunSpec™ Compliant Inverter Management
- Energy Storage Management
- Battery Capacity Monitoring / Management
- Grid Characteristic Monitoring
- PowerTrip™ Reverse Power Relay Control

- Water Heater
- Car Charger
- Air Conditioner
- Pool Pump
- Clothes Dryer

Time-of-Use Load Control
ZigBee™ Wireless



more information at: e-gear.us



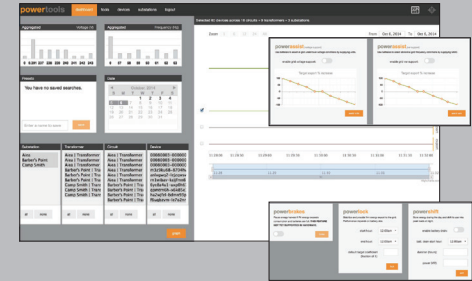
DISTRIBUTED ENERGY PARTICIPANT

Distributed Asset Managers / Aggregators / Utilities

Portfolio Management tools allow remote operational parameter updates, real time edge of grid visibility, control and data collection, incentive management and autonomous or directed grid support service provision in any aggregation or segregation.

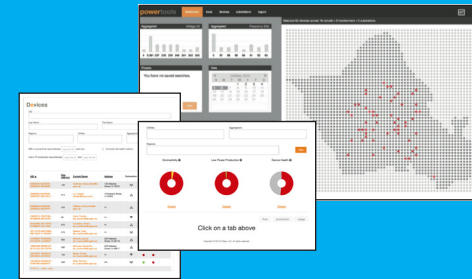
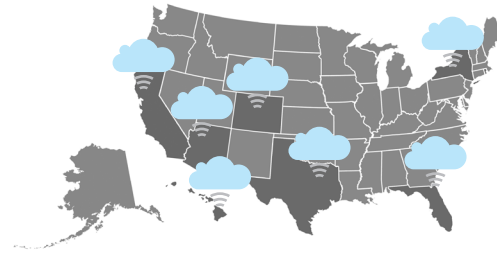


E-GEAR™ EMC INTERFACE



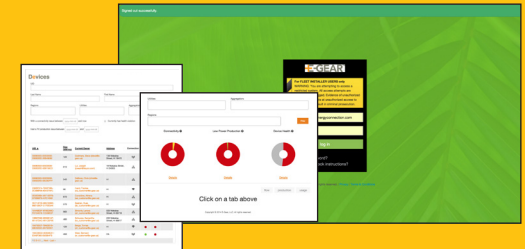
National EPCs

Instantly convert thousands of existing Distributed Generation assets into Distributed Energy Management Resources. Maximize portfolio revenue through added customer value and ancillary grid support partnerships Monitor and manage fleets of internal or EPC partner installations.



Regional EPCs

Maximize Customer Value Propositions through bundling distributed generation with energy management tools, critical load backup and ancillary grid support revenue. Monitor, manage, track and report on install base; system performance, uptime and issues.



Consumers

Set-and-Forget dashboard tools put **Energy Consumers** in control of their time of use, backup storage (when present) and incentive program participation. **Distributed Energy Generators** can automate generation smoothing, time of storage or export and ancillary service participation.

